

DRILL-JET STANDS

LISSMAC
CONSTRUCTION TECHNOLOGY

COMPACT, FUNCTIONAL AND ROBUST DIAMOND CORE DRILLING STANDS
FOR RELIABLE PROFESSIONAL USE

- Simple assembly and efficient exchange of the core drill motors via the UNIVERSAL quick clamping collar system.
- The UNIVERSAL-mounting plate makes it easy to mount any drill motor precisely
- Ergonomic and effortless core drilling by hand crank which can be operated from either side
- The support feed is precisely controllable with 1:1 direct ratio or an additional 1:2 fine control (CDR 402) ratio.
- Precise support guidance using V-sliding blocks and the aluminium profile column
- The bearing guide is precise and sturdy, and can be easily adjusted
- The steel gear rack is safely built into the aluminum column
- For drilling at an angle, the aluminium profile column can be pivoted backwards by up to 45°
- The integrated handle on the aluminium profile column offers multi-purpose handling and drilling stand transport
- Precise alignment of the core drilling stand by four levelling screws as well as a vertical and horizontal water level integrated in the "support"
- The support can be locked in any position with a locking screw, for stepless height adjustment



CDR 342



[1] CDR 162



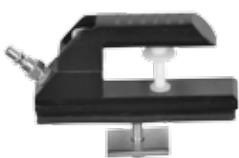
[2] CDR 402



[3] Collar



[4] Quick-clamping spindle M12



[5] Vacuum cover



[6] Vacuum sealing ring



[7] UNIVERSAL spacer plate



[8] Anchoring iron



[9] Core bit removing device



[10] Vacuum pump



[11] Vacuum plate



[12] Water collecting ring

TECHNICAL DATA	CDR 162	CDR 342	CDR 402
core bits Ø recommended (max.)	150 mm (162 mm)	300 mm (342 mm)	350 mm (402 mm - spacer plate)
adjustable useful length	585 mm	620 mm	585 mm
motor mounting using	collar-Ø 60 mm	UNIVERSAL	UNIVERSAL
feed gears operation from either side	1:1	1:1	1:1 und 1:2
feed	hand crank	hand crank	hand crank
angle drilling	90° - 45°	90° - 45°	90° - 45°
dimensions (l/w/h)	450/230/900 mm	470/280/1020 mm	520/390/1035 mm
weight	7.7 kg	10.9 kg	18.9 kg

CORE DRILL STAND	NR.
CDR 162 with clamping collar Ø 60 mm quick-clamping system	700319
[1] CDR 342 with UNIVERSAL quick-clamping system	700320
[2] CDR 402 with UNIVERSAL quick-clamping system	700321

ACCESSORIES	NR.
[3] CDR 342 - collar Ø 60 mm	700322
[4] CDR 162 / 342 / 402 - quick-clamping spindle M12	700323
[5] CDR 162 / 342 - vacuum cover	700324
[6] CDR 162 - vacuum sealing ring	700325
[6] CDR 342 - vacuum sealing ring	700326
[7] CDR 342 / 402 - UNIVERSAL spacer plate 30 mm	700327
[7] CDR 342 / 402 - UNIVERSAL spacer plate 60 mm	700328
[7] CDR 342 / 402 - UNIVERSAL spacer plate 90 mm	700329
CDR 342 - quick-clamping mounting plate	700330
CDR 402 - quick-clamping mounting plate	700331
CDR - anchoring dowels Ø 16mm / M12 (50 pcs.)	700401
[8] CDR - anchoring iron incl. grip	700402
[9] CDR - core bit removing device 1 1/4"	700403
[10] CDR - vacuum pump incl. 2 m hose and pneumatic quick coupling	700350
[11] CDR - vacuum plate	700360
[12] CDR - water collecting ring LWR 100	1018354
[12] CDR - water collecting ring LWR 150	1018355
[12] CDR - water collecting ring LWR 200	1018356
[12] CDR - water collecting ring LWR 250	1018357
[12] CDR - water collecting ring LWR 350	1018358
CDR - rubber seal set LWR 100	1021053
CDR - rubber seal set LWR 150	1021054
CDR - rubber seal set LWR 200	1021055
CDR - rubber seal set LWR 250	1021056
CDR - rubber seal set LWR 350	1021057
CDR - sealing disc with scale LWR 100	1021059
CDR - sealing disc with scale LWR 150	1021060
CDR - sealing disc with scale LWR 200	1021061
CDR - sealing disc with scale LWR 250	1021062
CDR - sealing disc with scale LWR 350	1021063

